



HANSON WINDOWS

MADE WITH THERMAL BROKEN ALUMINUM
2020/20201

ABOUT US

Located in Oakville Ontario, Hanson Windows is composed of quality thermal broken aluminum window and door products as well as dedicated professionals. With over 30 years of experience in the fenestration industry, Hanson is committed to provide the best quality products and excellent service for our customers.

When it is the time to choose the right aluminum window & door supplier for your business or home needs, you can count on Hanson for exceptional products that will fit your budget. We guarantee you receive the best quality products delivered to you and totally hassle free.

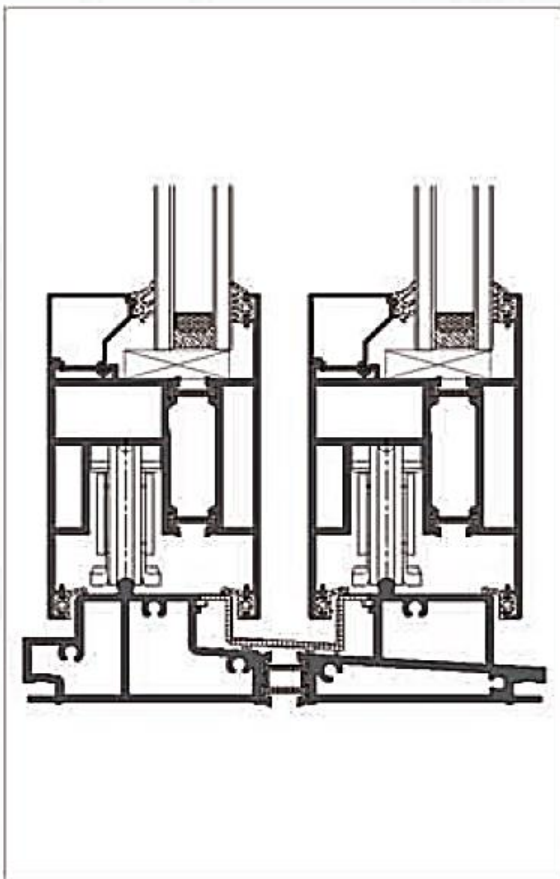
ABOUT OUR PRODUCTS

Originally from Germany, Hanson fenestration system is designed using German technology and meets the European quality standards. Design modifications are also made to better suit the Canadian weather and geographic conditions.

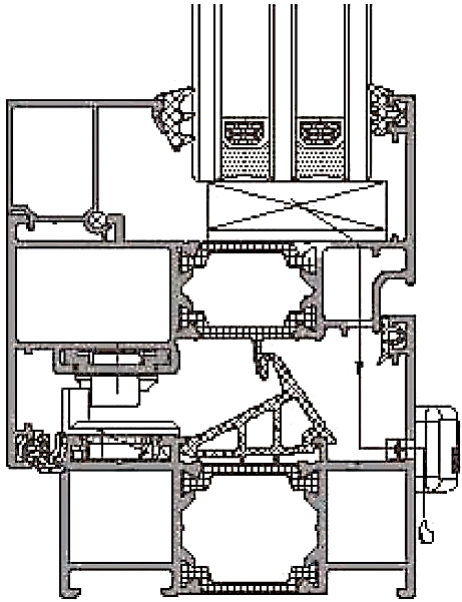
Manufacturing and fabricating processes are strictly monitored to ensure Hanson products satisfy all the necessary standards. Hanson fenestration products are guaranteed to meet your expectations for aluminum fenestration products.

WHY HANSON PRODUCTS

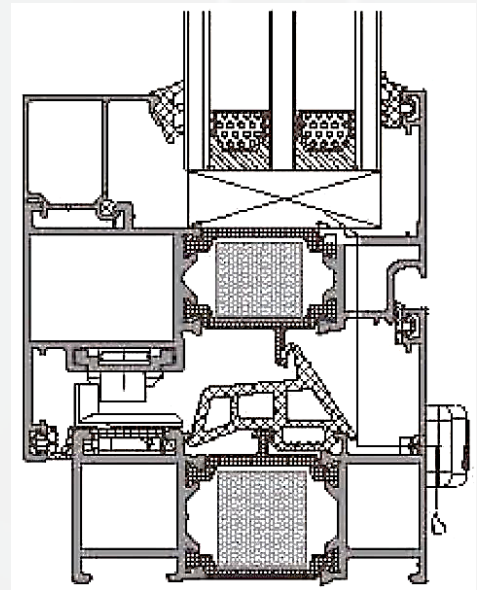
- **DURABILITY** – Aluminum alloy is light-weighted yet long-lasting
- **ENERGY EFFICIENT** – Excellent insulation preventing heat gain and loss with thermal broken design
- **COST EFFICTIVE** – Long lasting products and lower manufacturing costs
- **MORDENNESS** – Aluminum alloy products compliment residential and commercial applications virtually
- **VERSATILITY** – High-end custom products with multiple choices for color, shape, configuration and coating
- **WEATHER RESISTANT** – Hanson products have excellent tolerance against solar radiation and extreme temperature with high quality glass and coatings
- **ENVIRONMENTALLY FRIENDLY** – Aluminum is extremely sustainable as it can be recycled



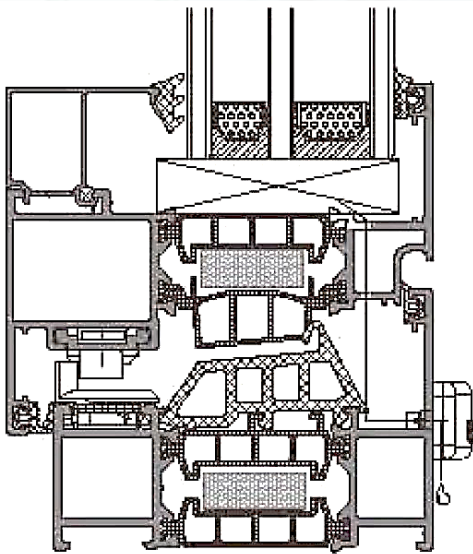
THERMAL BROKEN ALUMINUM PRODUCT PROFILES



CHW65 Series



CHW70 Series



CHW80 Series

The profile design for doors and windows of Hanson is scientific and reasonable. The appearance and styles are rich and changeable. The supporting accessories are sound, the standard for processing process is normative, and the hardware accessories are universal and convenient. Perfect system design, optimized system solutions, professional R&D team and standardized construction create a good life space for our customers.

HIGHLY CUSTOMIZED PRODUCTS



RESIDENTIAL PROJECT DEMONSTRATION
1312 HILLHURST RDOAKVILLE, ON L6J 1X5

TILT&TURN WINDOW



FEATURES

SIZE

Hanson offers the largest sizes available
Up to 1200mm * 1800mm

GLASS

Double and triple glazing available
6 mm + 12A + 6 mm Low – E tempered
insulated glass unit

SEAL

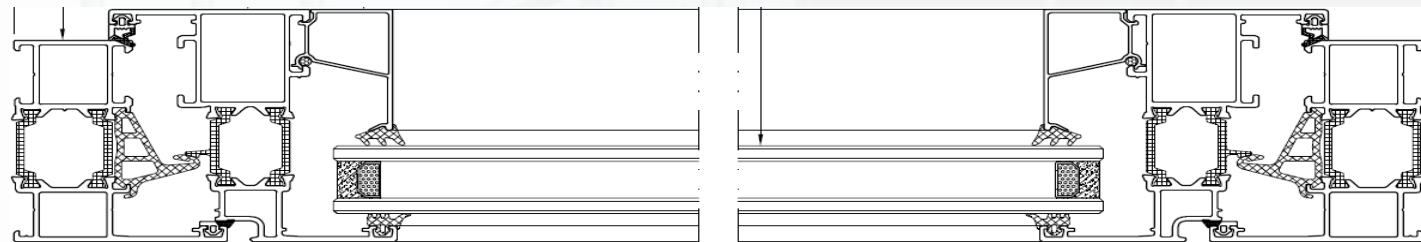
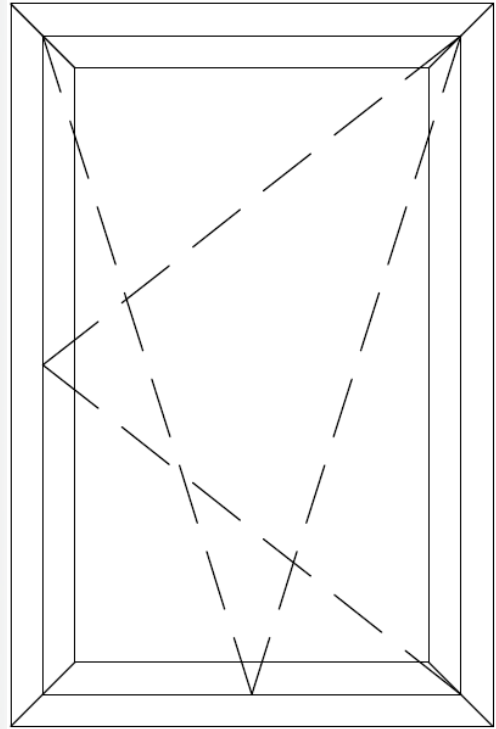
EPDM weather strips with
more than 25% silicone content
Weatherproofing silicone sealants

COLOUR

Multiple colour options available
for exterior and interior

HARDWARE

High quality hardware and fasteners for all
Hanson systems with colour options available



CASEMENT WINDOW



FEATURES

SIZE

Hanson offers the largest sizes available
Up to 800mm * 1500mm

GLASS

Double and triple glazing available
6 mm + 12A + 6 mm Low – E tempered
insulated glass unit

SEAL

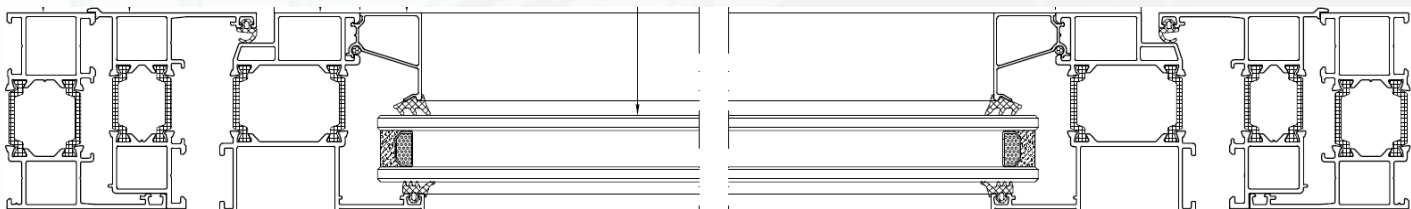
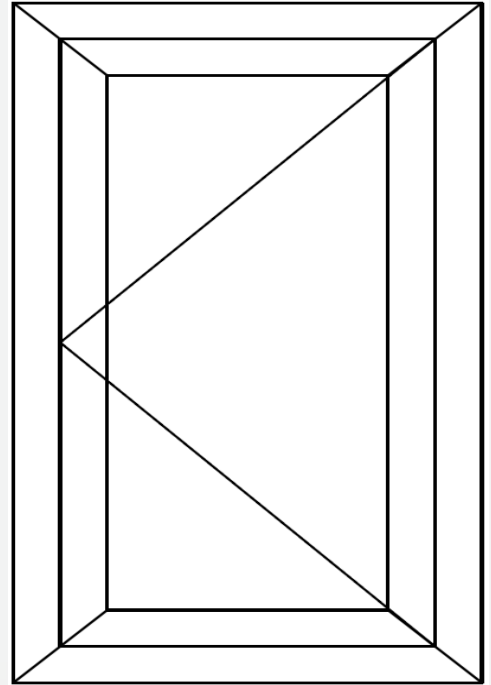
EPDM weather strips with
more than 25% silicone content
Weatherproofing silicone sealants

COLOUR

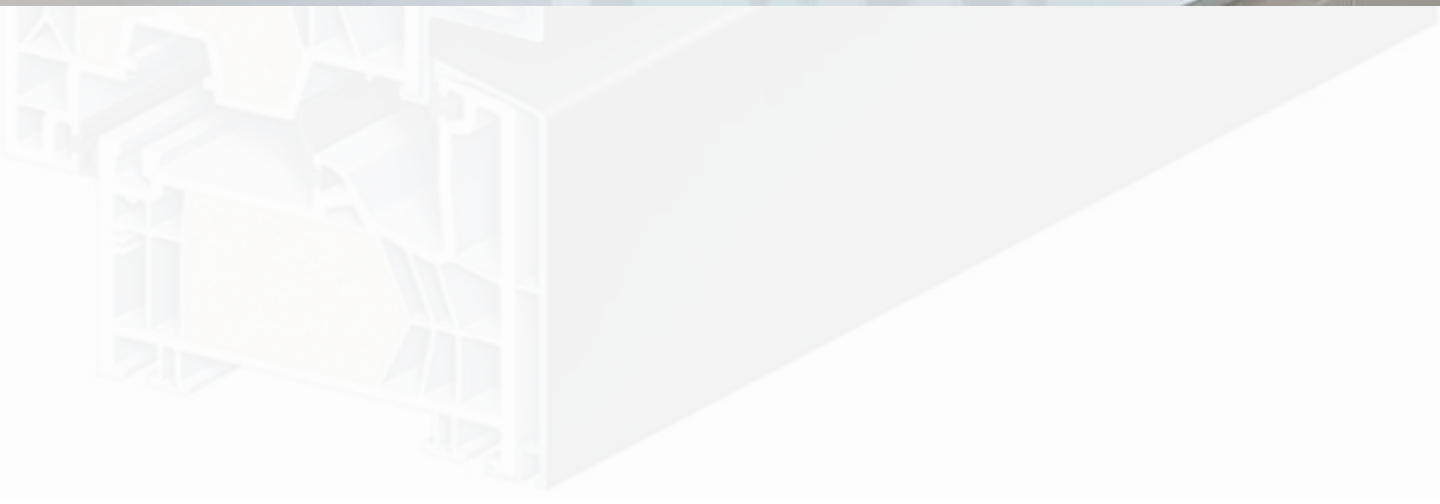
Multiple colour options available
for exterior and interior

HARDWARE

High quality hardware and fasteners for all
Hanson systems with colour options available



AWING WINDOW



FEATURES

SIZE

Hanson offers the largest sizes available
Up to 1200mm * 1800mm

GLASS

Double and triple glazing available
6 mm + 12A + 6 mm Low – E tempered
insulated glass unit

SEAL

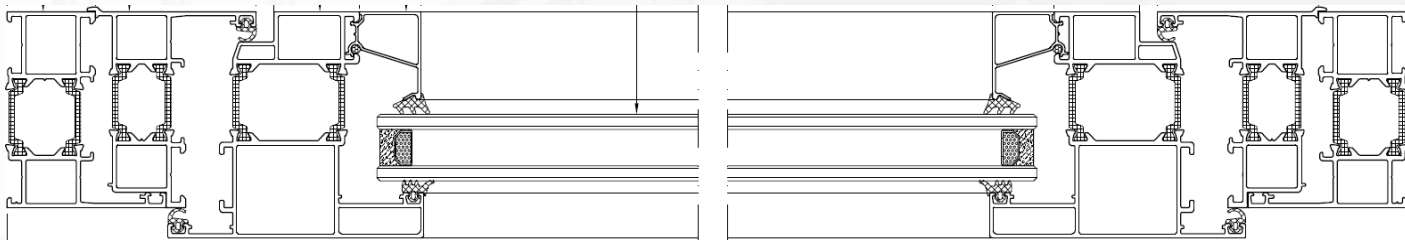
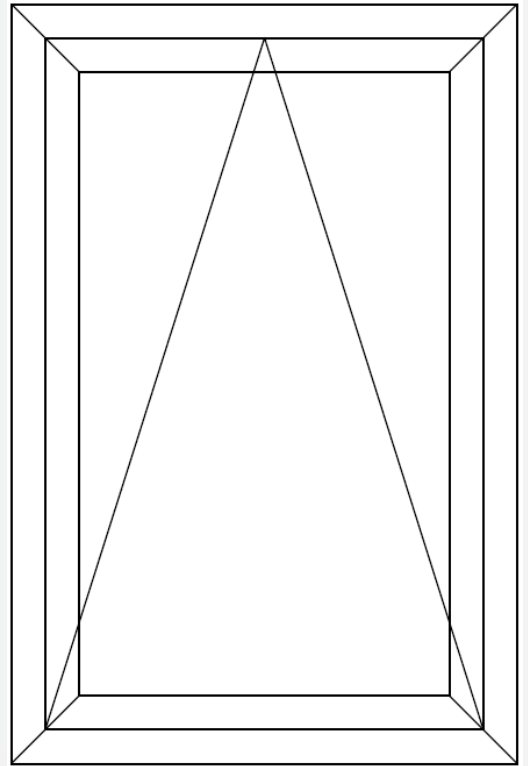
EPDM weather strips with
more than 25% silicone content
Weatherproofing silicone sealants

COLOUR

Multiple colour options available
for exterior and interior

HARDWARE

High quality hardware and fasteners for all
Hanson systems with colour options available



FIXED WINDOW



FEATURES

SIZE

Hanson offers the largest sizes available
Up to 1500mm * 1500mm

GLASS

Double and triple glazing available
6 mm + 12A + 6 mm Low – E tempered
insulated glass unit

SEAL

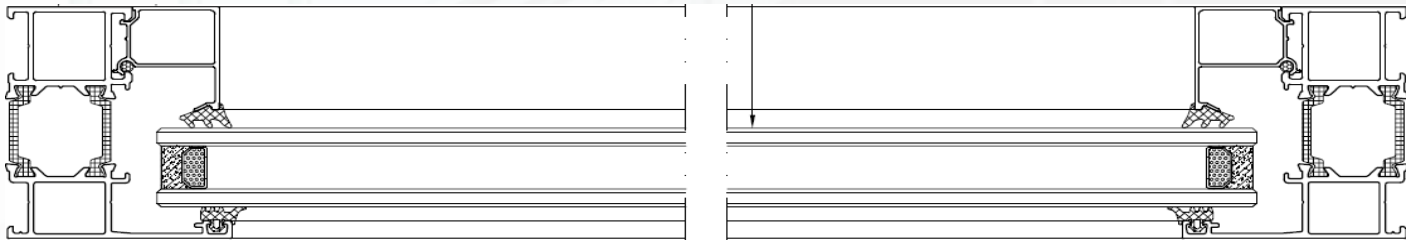
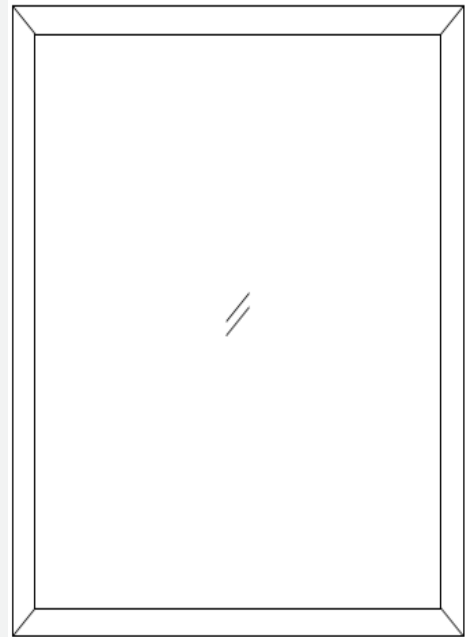
EPDM weather strips with
more than 25% silicone content
Weatherproofing silicone sealants

COLOUR

Multiple colour options available
for exterior and interior

HARDWARE

High quality hardware and fasteners for all
Hanson systems with colour options available



SLIDING WINDOW AND DOOR



FEATURES

SIZE

Hanson offers the largest sizes available
Up to 2200mm * 2100mm

GLASS

Double and triple glazing available
6 mm + 12A + 6 mm Low – E tempered
insulated glass unit

SEAL

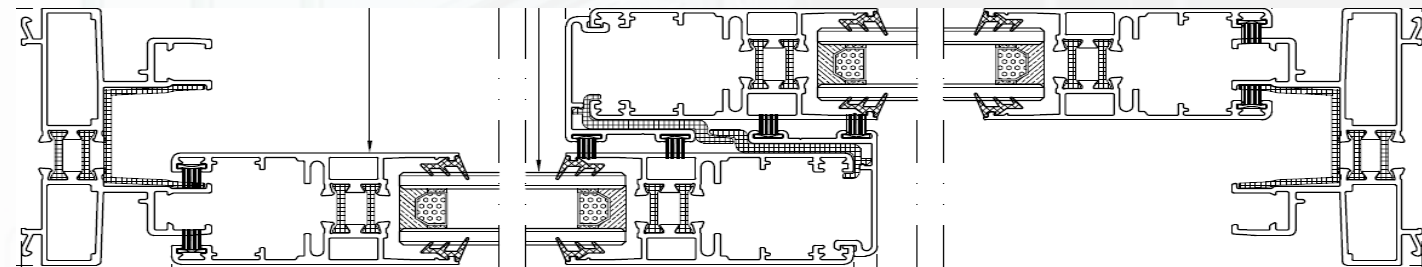
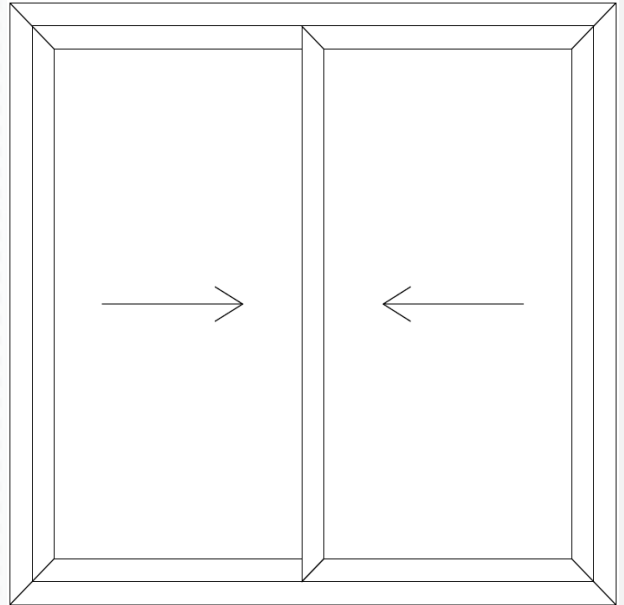
EPDM weather strips with
more than 25% silicone content
Weatherproofing silicone sealants

COLOUR

Multiple colour options available
for exterior and interior

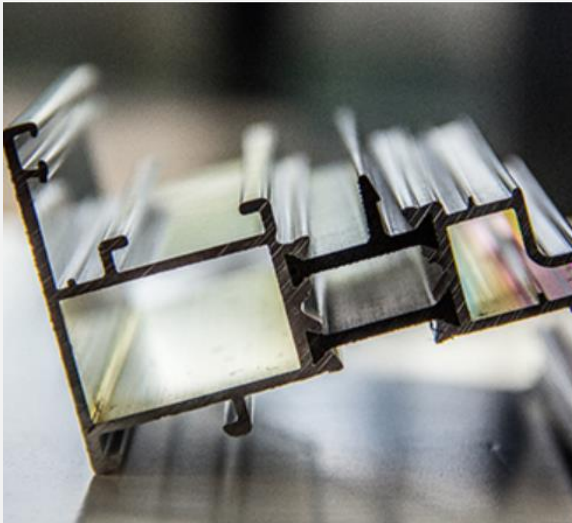
HARDWARE

High quality hardware and fasteners for all
Hanson systems with colour options available



WHAT HANSON OFFERS AND MORE

ALUMINUM EXTRUSION



Hanson offers aluminum extrusions including profiles for architectural use, industrial use, decorative purposes, and for more projects including the use in the Information Technology field, real estate, solar energy as well as machinery.

Please contact our professional sales team and our product team for more information and customized profiles.

WHAT HANSON OFFERS AND MORE

HARDWARE



Hanson provides highly customized and quality accessories for fenestration and curtain wall systems for our customers including rubber strip which has good weather resistance, stability, a variety of hard sealing, gaskets, group angle steel sheet, zinc alloy border adjustment parts, magnetic strips, glass blocks and other components for our customers' need.



CCUC DEVELOPMENTS LTD.

WHERE EXQUISITE CRAFTSMANSHIP MEETS LUXURY

CUSTOMIZATION TO CREATE EXCEPTIONAL QUALITY PRODUCTS

Tel: +1 (905) 844 0508

Email Address: hansonwindows.ca@gmail.com

Official Website: hansonwindows.ca